



www.touchedna.de

MINUTE RECOVERY
MINUTE RECOVERY
MINUTE RECOVERY

DNA RESCUE
NO TOUCH



WWW.TOUCHEDNA.DE

TOUCH DNA

e.g., Firearms, Shell Casings,
Tool Handles, Clothing Areas

LCM SAMPLES

e.g., dissected sperm cells

LATENT PRINTS

Identified with powders
(not lifted)

LATENT PRINTS

(Fumed, deposited, or vacuum)

JJ LYSIS CHAMBER

Identified with powders
(not lifted)

CORE TECHNOLOGY

Xs™ Column

Amplicon^{R/X}™



+



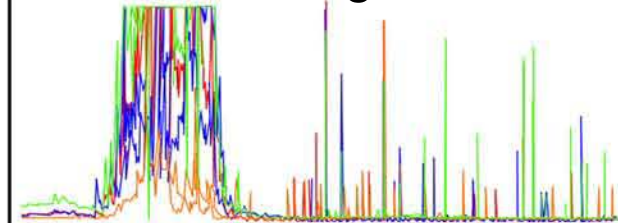
Distributor :



Manufactured by:utor :



80% DNA Recovery
10-20x RFU Signal Boost



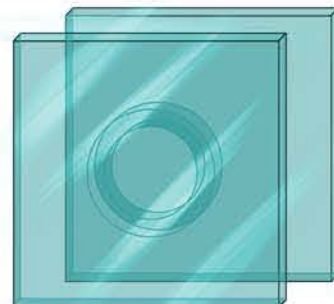
Full profiles from ≥ 25 cells

ADHESIVE EVIDENCE

e.g., Stamps, Duct Tape
Electrical Tape

LATENT PRINTS

(Lifted)
e.g., Hinge Cards, Lifts





Evidence: handled objects, tools, firearms, unfired rounds, zipper pulls, IEDs, anything with no evident body fluid stains



Evidence: latent prints identified with powders, dyes, fuming (not lifted) deposition or vacuum



Evidence: duct tape, electrical tape, postage stamps, sticky tape, lifts



Evidence: dissected or isolated cells from sexual assault evidence – sperm or epithelial cells stained with SPERM HY-LITER, Zeiss PALM, Leica, MMI or Aureka

New Integrated DNA Purification and post-PCR Technology Specific à la carte accessories for Touch, Fingerprint, Adhesive and LCM Kits

No DNA Left Behind:

- * Optimized collection/lysis buffer
- * Minimal losses through DNA purification
- * 80% recovery vs. 80% loss (e.g., bind/wash/elute)

Concentrate your DNA up to 5X:
use more DNA in your PCR

1-step spin column purification

#7001 DNA Rescue Kit: Touch DNA

- Kit includes:
- pre-PCR
 - 20 Xs purification columns
 - ProK, collection/lysis buffer
 - spin baskets, collection tubes
 - full protocol

- post-PCR
- AmpliconRx
- 20 columns
- binding buffer

DNA profiles from

- * Latents not suitable for comparison
- * Smudges, partials, streaks OK
- * Pick a single fingerprint to profile - reduce the chance of a mixture

Removes inhibiting powders and dyes
– reduce chances of obtaining mixed profiles

Defeat / tame adhesive evidence

- solves a sticky problem!
- * Adhesive Taming material provided
- * Wetwop friendly
- * Partial /incomplete latents OK

Simple recovery of adhesive trapped evidence – *in situ* JJ chamber digestion or swab collection

#7002 DNA Rescue Kit: Fingerprint DNA

- Kit includes:
- pre-PCR
 - 20 Xs purification columns
 - ProK, collection/lysis buffer
 - spin baskets, collection tubes
 - full protocol

- post-PCR
- AmpliconRx
- 20 columns
- binding buffer

#7003 DNA Rescue Kit: Adhesive DNA

- Kit includes:
- pre-PCR
 - 20 Xs purification columns
 - ProK, collection/lysis buffer
 - spin baskets, collection tubes
 - taming material (optional JJ chamber)
 - full protocol

- post-PCR
- AmpliconRx
- 20 columns
- binding buffer

Fulfill the promise of LCM

- * Find the sperm with SPERM HY-LITER PI™
- * Get the DNA profile with OneTouch™
- * Obtain DNA profiles from ≥25 cells

#7004 DNA Rescue Kit: LCM DNA

- Kit includes:
- pre-PCR
 - 20 mini Xs purification columns
 - ProK, DTT, lysis buffer
 - collection tubes
 - full protocol

- post-PCR
- AmpliconRx
- 20 columns
- binding buffer

